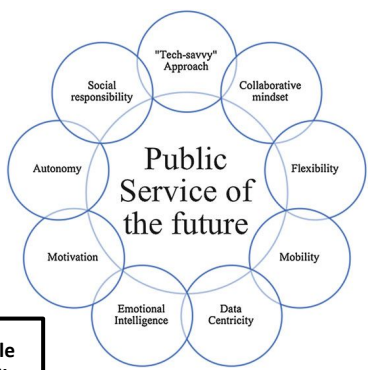
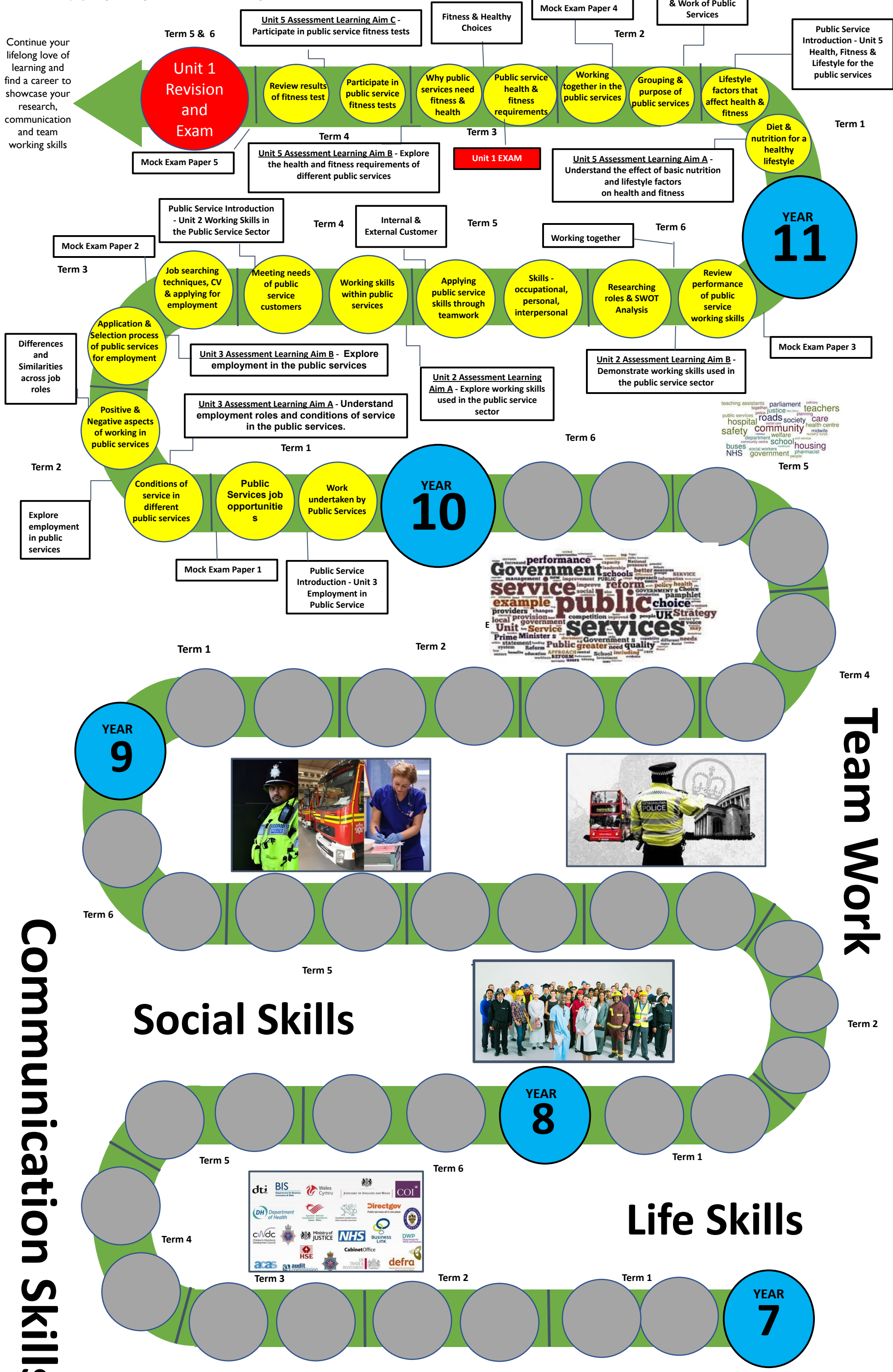


BTEC Public Services LEARNING JOURNEY

The aim of this curriculum is to give students an appreciation of where they are now, how they got here and where they are going. To develop lifelong learning skills and character strengths



Continue your lifelong love of learning and find a career to showcase your research, communication and team working skills



Communication Skills

Team Work

Social Skills

Life Skills

Life Long Learning

